



BRUCE MUSEUM
One Museum Drive • Greenwich, CT 06830-7100
203.869.0376 • www.brucemuseum.org

A Child's View: 19th-Century Paper Theaters

October 30, 2010 – January 30, 2011

Bruce Museum, 1 Museum Drive, Greenwich, CT 06830

All images are from the Collection of Eric G. Bernard. Photographs are by Paul Mutino.
These images are available as digital files (JPEG 300 dpi) for exhibition publicity only. To receive images via e-mail contact:
Mike Horyczun, Bruce Museum Director of Public Relations, (203) 413-6735, or mike@brucemuseum.org.



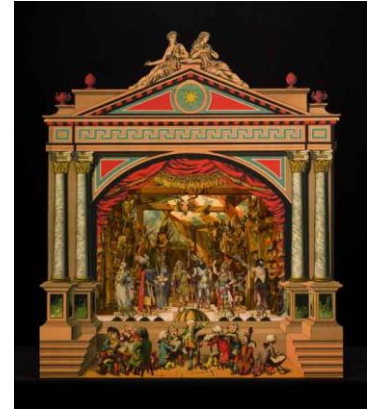
Theater_01

Publisher: Imagerie Dehault
Proscenium, *Grand Théâtre*;
scenery, *Prison*;
figures, *Costumes Pour Le Grand Théâtre*
France, ca. 1890
Facsimile



Theater_02

Publisher: Alfred Jacobsen
Proscenium, "B" series
scenery, *Pragsal* (Paris Opera);
Denmark, ca. 1885.
original lithograph



Theater_03

Publisher: J.S. Schreiber
Proscenium, *Prozenium mit Musikkapelle*,
sheet number 300
Scenery for *Kriegerzelt (War Tent)*
Figures for *Siegfried*
Germany, ca. 1901
Facsimile/ original lithograph



Theater_04

Publisher: *Illustret Familie-Journal*
Proscenium, *Det nye dukketeater*
Scenery and figures, "*Ønskeringen*"
Denmark, 1918
Facsimile



Theater_05

Publisher: Adolf Engel
Proscenium, scenery,
Ägyptischer Temple (Egyptian Temple)
Germany, ca. 1880
Color lithograph



Theater_06

Publisher: Imagerie Pellerin
Proscenium, *Grand Théâtre Nouveau*,
Scenery for *La Fête Foraine*
(*The Fun Fair*)
France, ca. 1889
Color lithograph

- more -

A Child's View: 19th-Century Paper Theaters

October 30, 2010 – January 30, 2011

Bruce Museum, 1 Museum Drive, Greenwich, CT 06830

All images are from the Collection of Eric G. Bernard. Photographs are by Paul Mutino.

These images are available as digital files (JPEG 300 dpi) for exhibition publicity only. To receive images via e-mail contact: Mike Horyczun, Bruce Museum Director of Public Relations, (203) 413-6735, or mike@brucemuseum.org.



Theater_07

Publisher: W.G. Webb
Proscenium, *Fourpenny Stagefront*
Scenery and figures,
The Miller and His Men
England, ca. 1880
Hand-colored copper engraving



Theater_08

Publisher: Seix y Barral
Teatro de los Niños,
Proscenium, *Teatro-Escenario*, Modelo M
Scenery and figures, *La fiercilla domada*
(*The Taming of the Shrew*)
Spain, ca. 1918
Color lithograph



Theater_08side

Publisher: Seix y Barral
Teatro de los Niños,
Teatro-Escenario, Modelo M
Back stage view
Spain, ca. 1918
Color lithograph



Theater_08detail

Publisher: Seix y Barral
Teatro de los Niños,
Teatro-Escenario, Modelo M
Scenery and figures, *La fiercilla domada*
(*The Taming of the Shrew*)
Spain, ca. 1918
Color lithograph



Theater_9

Publisher: Seix y Barral
Teatro de los Niños,
Teatro-Escenario, Modelo CC
Scenery and figures, *Le leyenda de San Jorge*
(*The Legend of St. George*)
Spain, ca. 1925
Color lithograph



Theater_10

Publisher: Oemigke & Reimschneider
Proscenium, sheet number 779
Scenery for *Salon* and figures for *Hamlet*
Germany, ca. 1840
Facsimile



BRUCE MUSEUM
 One Museum Drive • Greenwich, CT 06830-7100
 203.869.0376 • www.brucemuseum.org

A Child's View: 19th-Century Paper Theaters

October 30, 2010 – January 30, 2011

Bruce Museum, 1 Museum Drive, Greenwich, CT 06830

All images are from the Collection of Eric G. Bernard. Photographs are by Paul Mutino.

These images are available as digital files (JPEG 300 dpi) for exhibition publicity only. To receive images via e-mail contact: Mike Horyczun, Bruce Museum Director of Public Relations, (203) 413-6735, or mike@brucemuseum.org.



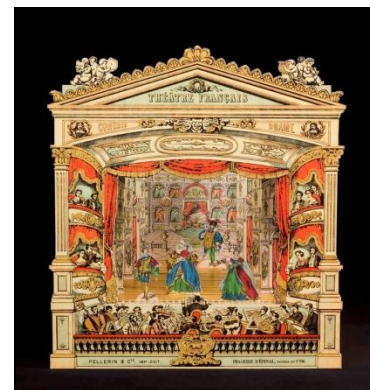
Theater_11

Publisher: Gustav Kühn
 Proscenium: *Neue Theater Proscenium*
 sheet number 8709
 Scenery, *Kirche* (Church), no. 7588/7589;
 Figures, *Maria Stuart*, no. 4303 (1860)
 Germany, ca.1835
 Hand colored copper engraving
 with proscenium facsimile



Theater_12

Publisher: J.H. Singer
 Proscenium, *Theater Imperial*
 Scenery and figures, *Pocahontas*
 New York, ca. 1883
 Color lithograph



Theater_13

Publisher: Imagerie Pellerin
 Proscenium, *Théâtre Française*
 Scenery and figures, *Cendrillon*
 France, ca. 1866
 Facsimile



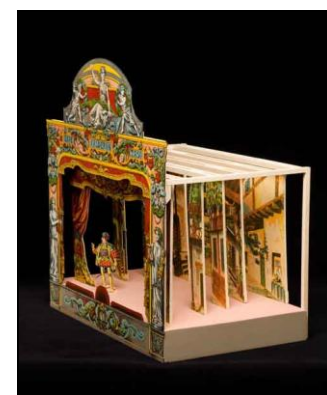
Theater_13side

Publisher: Imagerie Pellerin
 Proscenium, *Théâtre Française*,
 Scenery and figures, *Cendrillon*
 France, ca. 1866
 Facsimile



Theater_14

Publisher: Paluzie
 Proscenium, sheet number 1028
 Scenery and figures, *Don Juan Tenorio*
 Spain, ca. 1900
 Color lithograph



Theater_14side

Publisher: Paluzie
 Proscenium 1028
 Scenery and figures,
Don Juan Tenorio
 Spain, ca. 1900
 Color lithograph

* * * * *