

the Bruce

WHAT'S ON AT THE BRUCE—AUGUST NEWS AND EVENTS



Image by ChiChi Ubiña

Arms and Armor: Evolution and Innovation

Final day to view, August 11, 2024

[Read More](#)

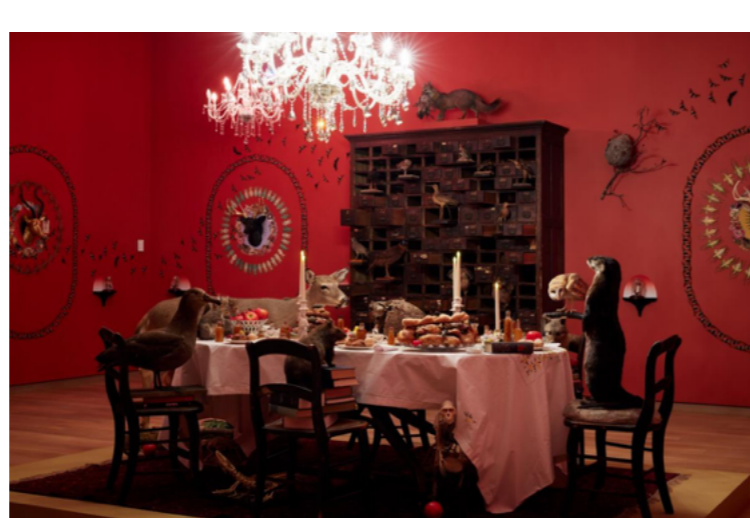


Image by ChiChi Ubiña

Jennifer Angus: The Golden Hour

Final day to view, September 1, 2024

[Read More](#)



iCreate 2024: Annual Juried Exhibition of High School Talent

Final day to view, September 1, 2024

[Read More](#)

NEWS



FREE for Kids Summer Adventure Weekends, Temporary Closing

Sunday, August 18 to Monday, August 26, 2024

Bruce Museum **FREE** for Kids Summer Adventure Weekends every Saturday and Sunday till September 8, 2024. Not available on Sunday, August 18, Saturday, August 24, and Sunday, August 25, 2024 due to closing.

The Bruce Museum, including the Café and Museum Store, will be closed for annual maintenance from **Sunday, August 18 to Monday, August 26, 2024**. The Museum will re-open to the public on Tuesday, August 27, 2024.

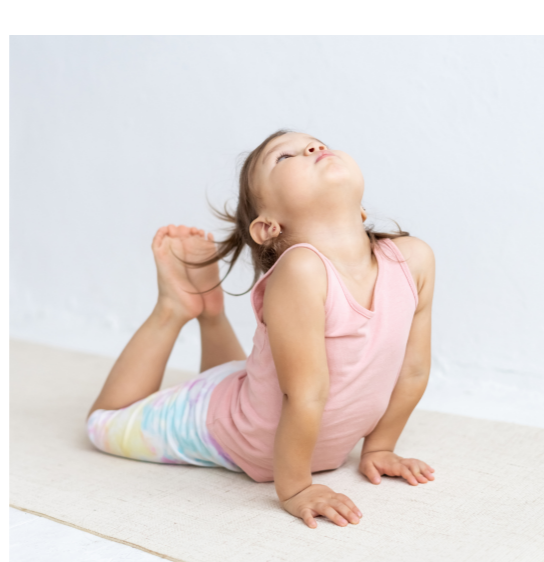
[Read More](#)



The Bruce Museum Receives Highest National Recognition

The Bruce Museum has again achieved accreditation by the American Alliance of Museums, the highest national recognition afforded to the nation's museums. Accreditation signifies excellence to the museum community, to governments, funders, outside agencies, and to the museum-going public.

[Read More](#)



Museum Movers: Yoga for Kids

Saturday, August 10, 2024, 11:00 AM–12:00 PM

[Read More](#)



An Enchanted Day: American Ballet Theatre at the Bruce

Saturday, September 28, 2024, 10:00 AM-12:00 PM and 12-2:00 PM sessions

[Read More](#)

BRUCE MUSEUM SEASIDE CENTER 10 TODS DRIFTWAY, OLD GREENWICH, CT



Fred Elser First Sunday Science: Edible/Medicinal Plants and Mushrooms with "Wildman" Steve Brill

Sunday, August 4, 2024, 2:00 pm-3:00 pm, Floren Family Environmental Center at Innis Arden Cottage, Greenwich Point Park, Old Greenwich, CT

"Wildman" Steve Brill, America's go-to guy for foraging.

[Read More](#)

Bruce Museum Store

Summer favorites ... Seaside Center Tees!
Adult sizes - \$36.00 (Children's Sizes available at the Seaside Center)
Free parking and admission Tuesday-Sunday, 10am-5pm.



[Read More](#)

Become A Member

Join today and enjoy access to all the Bruce has to offer with:

- Unlimited free access to the Bruce for the Member to the Bruce
- 10% off in the Museum Store and Café
- Members pricing on public programs and performances
- Invitations to Members-Only events
- Member Previews
- Reciprocal admission to the Fairfield-Westchester Museum alliance

[View as Webpage](#)

