

Her Crowd: New Art by Women from Our Neighbors' Private Collections

September 24, 2016 through January 2, 2017

Bruce Museum, 1 Museum Drive, Greenwich, CT 06830

High-resolution images are available by contacting Bruce Museum Press office at 203-413 6735.
Please do not crop or alter the images. Please include copyright credits.



1_Lapin

Annie Lapin (American, b. 1978)

A Throughishness Sloshes and Comes, 2014

Oil paint, acrylic paint, and acrylic enamel spray-paint on canvas, 82 x 27 in.

Collection of René and Marie-France Kern

Photo: Brian Forrest

Courtesy of Honor Fraser Gallery



2_Dwyer

Nancy Dwyer (American, b. 1954)

Food, 2012

Reconfigured galvanized metal trash cans,
30 x 105 x 21 in., Edition of 2

Collection of Emily Fisher Landau, AMART LLC, FL 1290

Image courtesy the artist and Sandra Gering Inc.



3_Expósito

Alessandra Expósito (American, b. 1970)

Trixie, 2006

Mixed media on chicken skull, 3 x 1 x 2 ¼ in.

Collection of David and Sandra Joys

Photo by Paul Mutino



4_Gallagher

Ellen Gallagher (b. Providence, RI, 1965)

Glisters, 2010

Oil, pencil and paper on canvas, 24 x 24 in.

Private Collection, Greenwich, CT

Photo by Tom Powel Imaging

Her Crowd: New Art by Women from Our Neighbors' Private Collections

September 24, 2016 through January 2, 2017

Bruce Museum, 1 Museum Drive, Greenwich, CT 06830

High-resolution images are available by contacting Bruce Museum Press office at 203-413 6735.
Please do not crop or alter the images. Please include copyright credits.



5_Saville

Jenny Saville

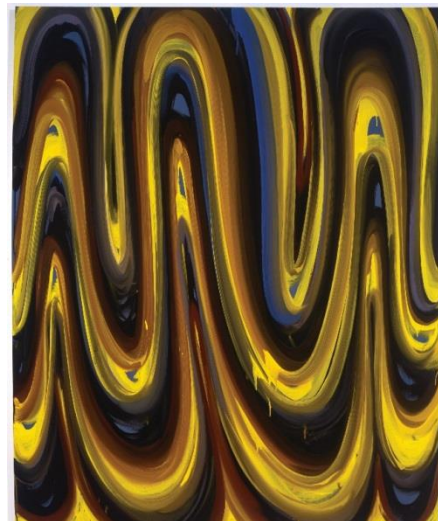
The Mothers, 2011

Oil and charcoal on canvas, 106 5/16 x 86 5/8 in.

Collection of Lisa and Steven Tananbaum

© Jenny Saville

Courtesy of the artist and Gagosian Gallery



6_Davie

Karin Davie (b. Toronto, Canada, 1965)

Interior Ghosts #12, 2001

Oil on linen, 72 x 60 in.

Collection of Ann and Argyris Vassiliou

Photo by Zindman-Fremont, NYC ©2001

© Karin Davie



7_Harkness

Hilary Harkness

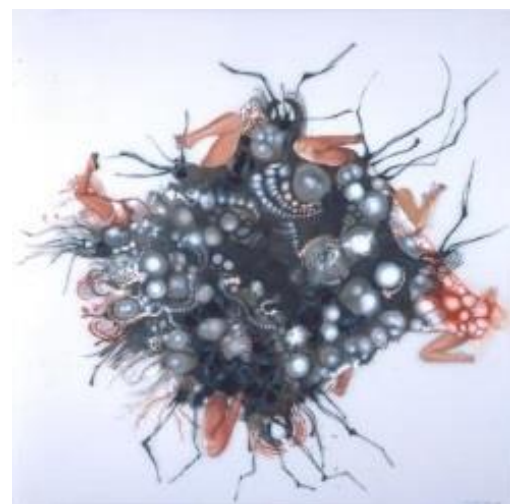
Blue Nude, 2012-2014

Oil on linen panel, 7 ½ by 10 ¼ in.

Collection of Rick and Monica Segal

© Hilary Harkness

Courtesy: Mary Boone Gallery, New York



8_Mutu

Wangechi Mutu

(b. Nairobi, Kenya, 1972)

Untitled (from Tumors series), 2004

Ink, acrylic, photocollage, and contact paper on Mylar

41 ¾ x 42 in.

Private Collection, Greenwich, Connecticut

Image: © Wangechi Mutu, Courtesy of the artist