



**BRUCE MUSEUM**  
 One Museum Drive • Greenwich, CT 06830-7100  
 203.869.0376 • www.brucemuseum.org

**Media Contact**

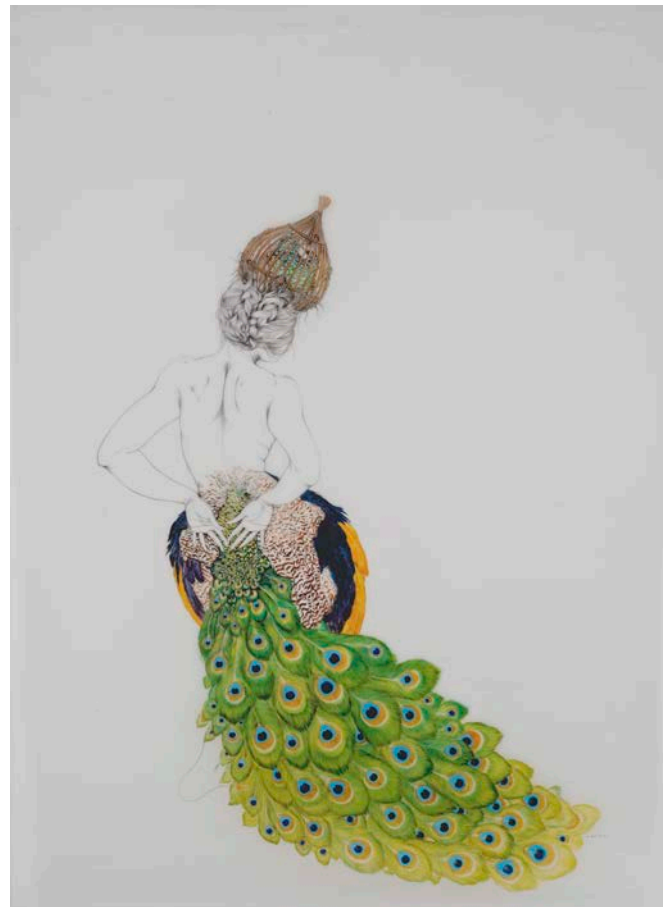
Karen Schwarz  
 Interim Director of Marketing and Communications  
 203 413-6735 | kschwarz@brucemuseum.org

*The Seven Deadly Sins: Pride*  
 June 27 – October 18, 2015

High resolution images are available for exhibition publicity purposes only, and can be found at  
 Dropbox: <https://www.dropbox.com/sh/7ii6jtzf0b3rml/AACUVHDvz2OyhWOxaVdlZFtSa?dl=0>



Hendrick Goltzius (Dutch, 1558-1617) after Cornelis van Haarlem (Dutch, 1562-1638)  
*Phaeton* from *The Disgracers*, 1588  
 Engraving  
 Collection of The Hearn Family Trust  
 Photograph by Paul Mutino



Fay Ku (American, 1974- )  
*Juno's Creatures*, 2014  
 Graphite and oil on mylar, 42 x 30 in.  
 Courtesy of the artist and Claire Oliver Gallery, New York



Jan Pietersz Saenredam (Dutch, 1565-1607) after Abraham Bloemaert (Dutch, 1564-1651)  
*Temptation of Man*, from *The History of Adam and Eve*, 1604  
Engraving  
Collection of The Hearn Family Trust  
Photograph by Paul Mutino



Gabriel Schachinger (1850-1912)  
*Sweet Reflections*, 1886  
Oil on canvas, 51 x 31 in.  
Woodmere Art Museum: Bequest of Charles Knox Smith  
Photograph by Rick Echelmeyer



Honoré Daumier (French, 1808–1879)  
*Mlle. Etienne-Joconde-Cunégonde-Bécassin de Constitutionnel...*, 1834  
Lithograph, 17 7/8 x 14 in.  
David Tunick, Inc. New York  
Photograph courtesy of David Tunick, Inc. New York